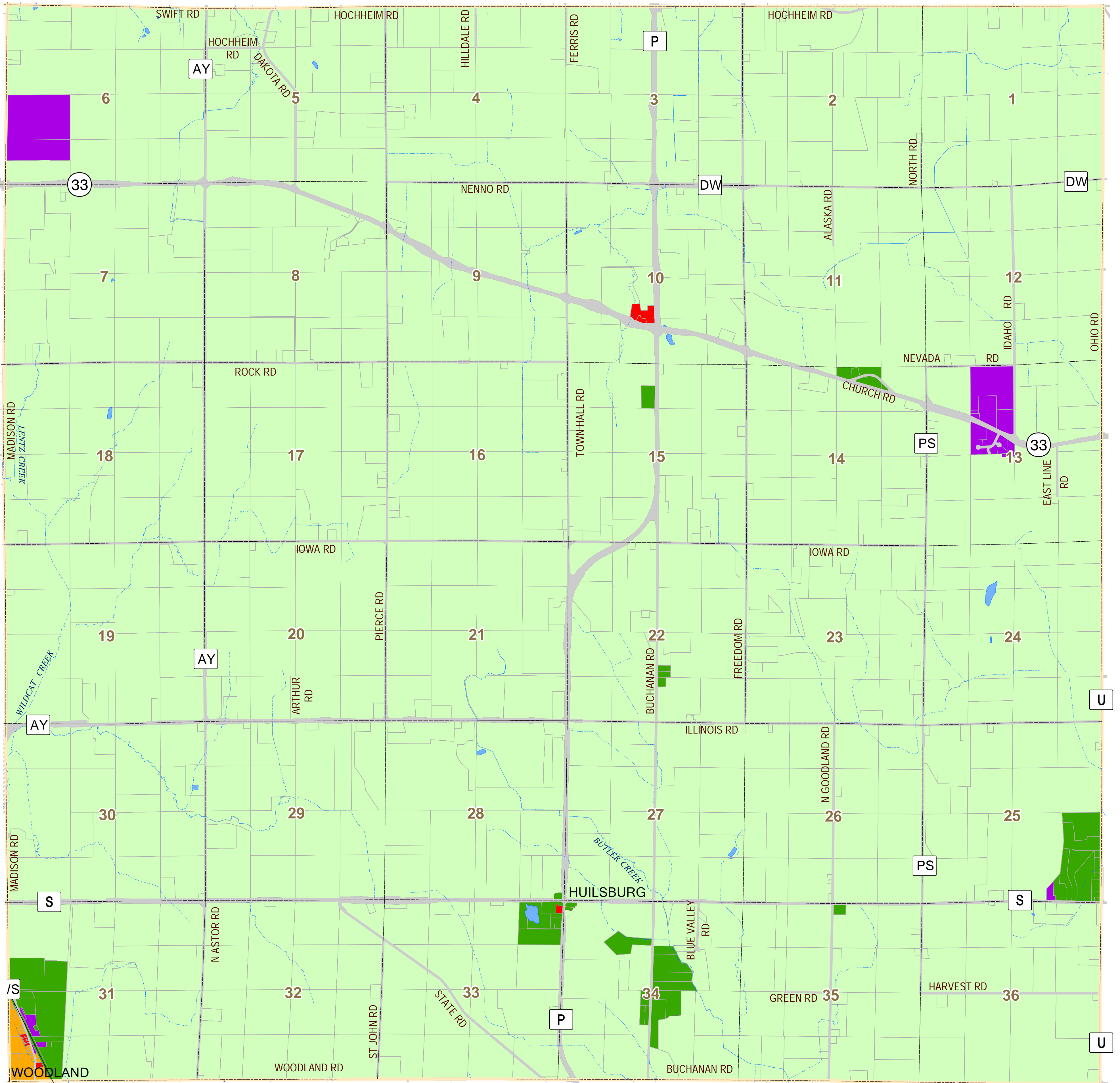
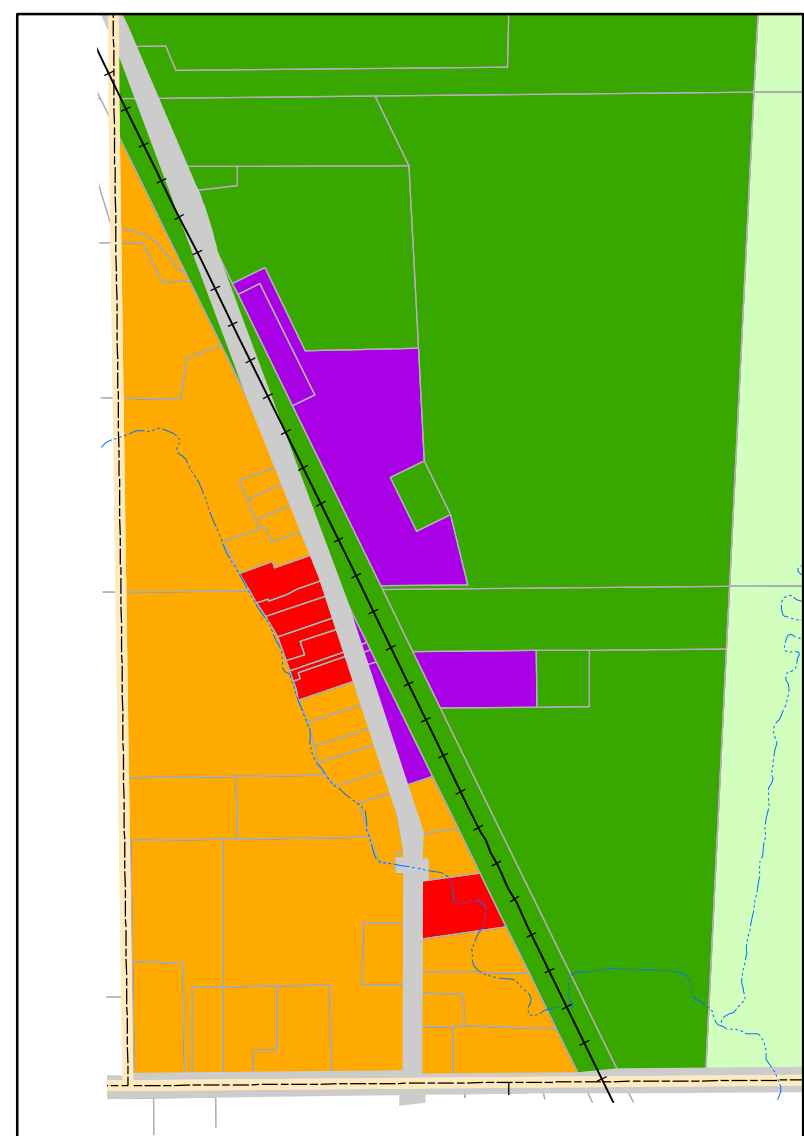


Farmland Preservation Zoning Map

Town of Herman, Dodge County, Wisconsin



WOODLAND INSET



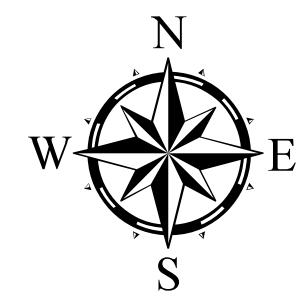
Legend

- State Highway
- County Highway
- Town Road
- Railroad
- Town Boundary
- Tax Parcel Boundary
- Section Line
- River or Stream
- Intermittent Stream

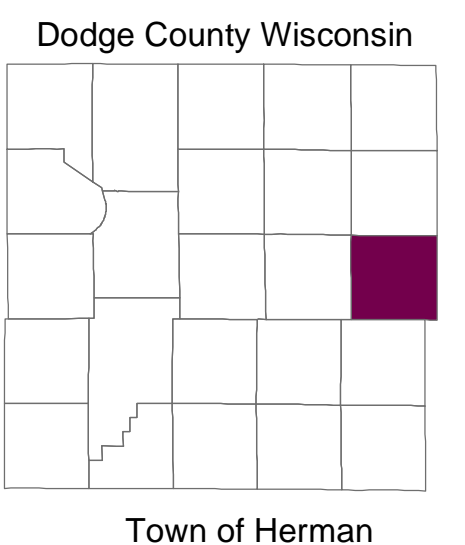
Zoning

- CO Conservancy
- A-1 Farmland Preservation
- A-2 General Agricultural
- R-1 Single Family Residential
- R-2 General Residential
- P-1 Park/Recreational
- B-1 Business/Commercial
- M-1 Manufacturing/Industrial
- Right-Of-Way
- Waterbody

THIS IS TO CERTIFY THAT THIS MAP IS A CERTIFIED COPY OF THE OFFICIAL ZONING MAP ADOPTED AND APPROVED WITH THE ZONING ORDINANCE, TOWN OF HERMAN, DODGE COUNTY, WISCONSIN ON September 21, 2010 BY THE TOWN BOARD OF THE TOWN OF HERMAN. (COUNTY BOARD APPROVED October 19, 2010)



Dodge County
Land Resources and Parks
Department



Source: Dodge County Land Resources and Parks Department, August 2010.
Created By: S Jansen, March 2010

1 inch = 1,600 feet

